

Madrid City Waste Management System

Víctor M. Sarabia Herrero

General Director of Waste Collection and Cleaning Services

Contents

- 01** Service scheme
- 02** 2020 Challenges
- 03** Strategy and Plan of Action
- 04** Biowaste collection

01 **Service scheme**

Service scheme



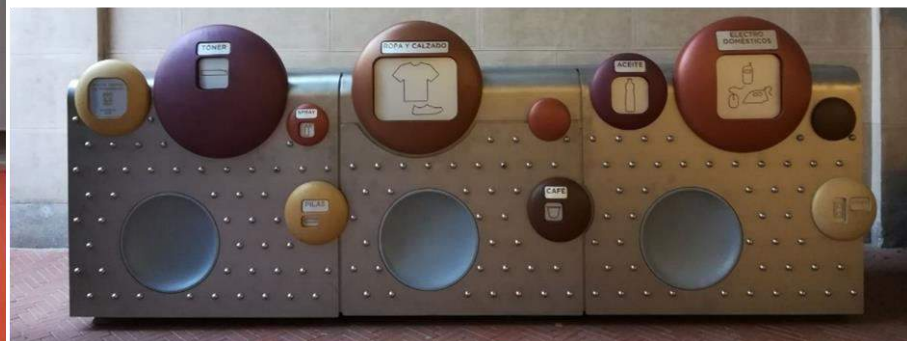
Madrid city has a set of infrastructures for collection, transport, treatment and recovery of domestic and commercial waste, among the most complete and advanced in Europe.

Waste collection in figures:

370 kg of waste generated by each resident per year	1.176.468 tons of waste collected by the municipal service	394.730 cubes and containers to deposit the waste selectively
--	---	---

Data source: General Directorate of Cleaning and Waste Services. Data as of December 31, 2018.

Adequate management of urban waste is an essential part for a sustainable development.



Waste Collection Main Services

- **Selective collection of the organic fraction, packaging and non-recyclable waste.**
- **Selective collection of paper-cardboard and glass fractions.**
 - Specific collection in commerce
- **Collection of other waste: clothes, vegetable oil, debris waste, batteries, domestic dead animals, sanitary waste...**
 - Collection, transport and storage according to characteristics
- **Management of “clean points” (drop off points).**
 - Fixed, mobile and proximity
 - Reuse initiatives
- **Municipal control of activities related to waste management.**
 - Surveillance of compliance with Cleaning and Waste Ordinance and contracts
 - Events
- **Education, dissemination and awareness.**
- **Attention to citizenship.**
 - Information
 - Suggestions, complaints and congratulations management.

Households and Commercial Waste Management. Types of Waste:

ORGANIC/ BIOWASTE



Brown container



Daily collection

PLASTIC, METALLIC AND BRIK PACKAGING



Yellow container



4 times / week

NO-RECYCLABLE



Orange container



Daily collection

GLASS



Green container



According to filling

PAPER AND CARDBOARD



Blue container



According to filling

Clean Point/ Drop off point facilities for hazardous and voluminous waste:



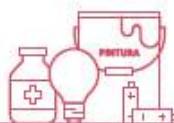
Clean point/ Drop off point

USED VEGETABLE OIL



Also in street markets

HAZARDOUS RESIDUES

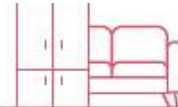


DEBRIS AND WORK WASTE



In clean points (according to admissible quantities) or hiring authorized managers

FURNITURE AND HOUSEHOLD GOODS



010
Also free pickup at home

ELECTRICAL AND ELECTRONIC APPLIANCES



Also free pick up in specialized establishments (small size) and free pick up at home (large size)

CLOTHES AND SHOES



Also through containers on the street and in some markets. And free pick up at home.

Brief history of waste collection in Madrid

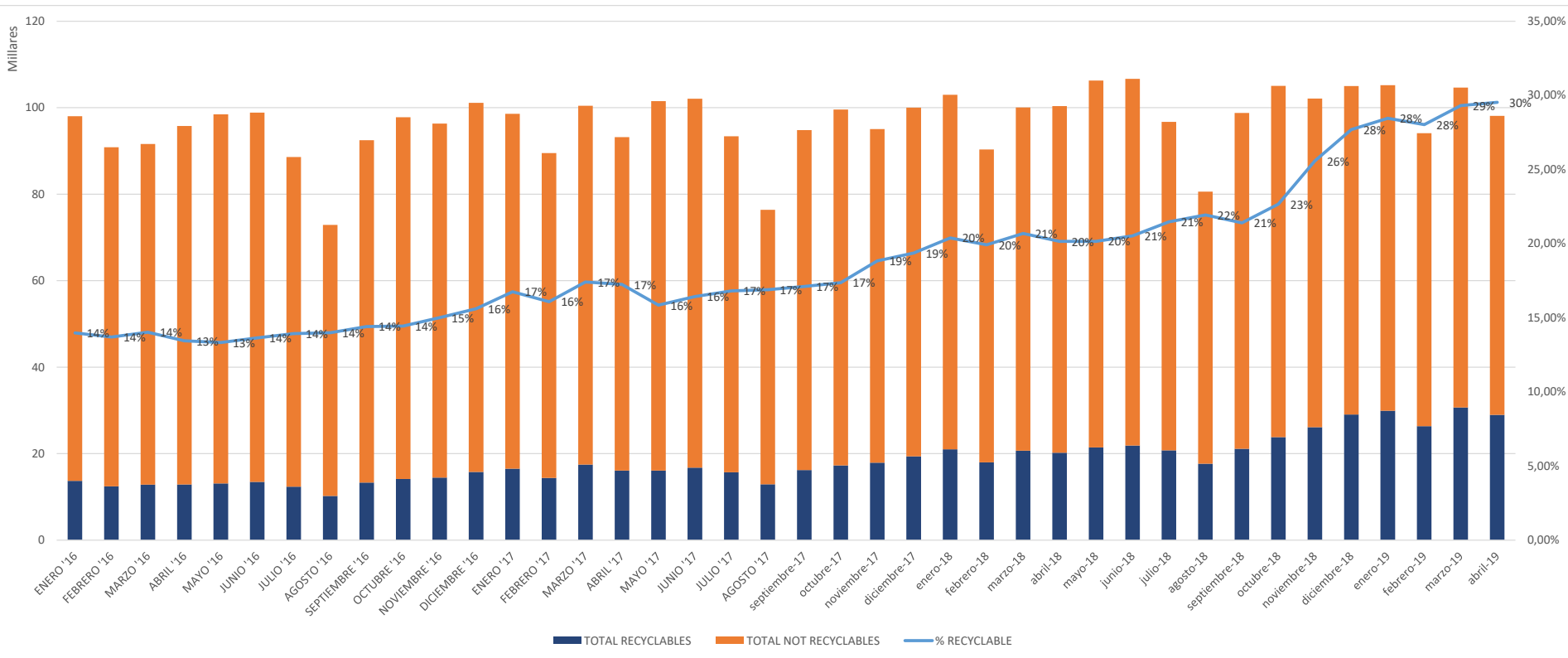


Main Commitments:

- 100% of vehicles type ECO or zero emissions.
- Ratios of 1 paper-cardboard and 1 glass containers per 450 inhabitants.
- Collect non-recyclable and organic household waste every day of the week and the packaging at least 4 days a week.
- 16 fixed, 350 mobile and 50 proximity clean points.
- Collection of dead animals within a period of 24 hours from the request of the service.
- Answer 60% of the suggestions, claims and congratulations in a maximum of 30 days and 100% in less than 2 months.

02 2020 Challenges

Evolution of recyclable and non-recyclable waste



Evolution of waste in 2018

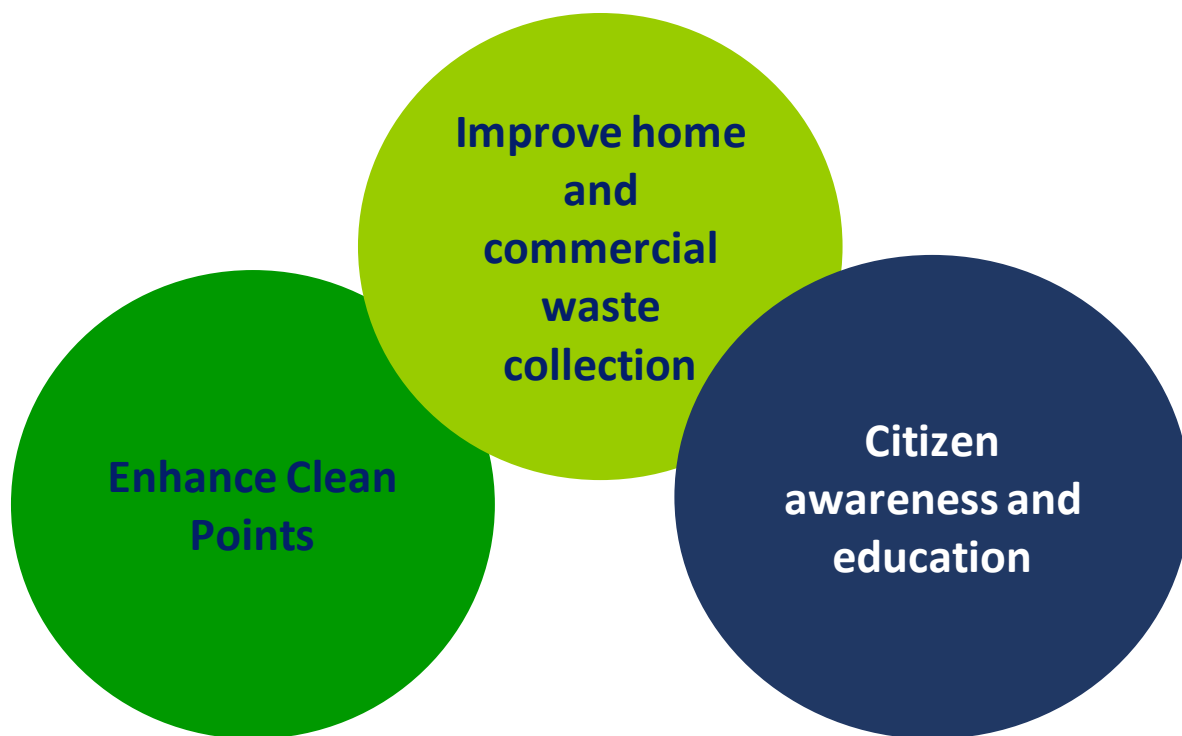
RESTO	PESO	928.298,35
No-Recyclable	INCREMENTO ANUAL	-1,58%
ENVASES	PESO	90.178,56
Packaging	INCREMENTO ANUAL	18,50%
VIDRIO	PESO	52.538,58
Glass	INCREMENTO ANUAL	9,58%
VIDRIO COMERCIAL (puerta a puerta)	PESO	1.230,98
Commercial glass	INCREMENTO ANUAL	175,33%
CLÍNICOS	PESO	4.689,66
Sanitary waste	INCREMENTO ANUAL	4,34%
PUNTOS LIMPIOS (voluminosos)	PESO	9.264,78
Clean point	INCREMENTO ANUAL	4,63%
ORGÁNICA	PESO	29.678,08
Organic/ Biowaste	INCREMENTO ANUAL	1341,43%
PAPEL Y CARTÓN	PESO	54.051,59
Paper and Cardboard	INCREMENTO ANUAL	41,00%
CARTON COMERCIAL (puerta a puerta)	PESO	5.732,33
Commercial Cardboard	INCREMENTO ANUAL	48,59%
RCD	PESO	18.615,09
Debris and work waste	INCREMENTO ANUAL	2,97%
PILAS	PESO	53,83
Batteries	INCREMENTO ANUAL	15,44%
ANIMALES MUERTOS	PESO	123,86
Dead domestic animals	INCREMENTO ANUAL	-4,34%
TOTAL	PESO TOTAL (Tn)	1.193.870,85
	INCREM. TOTAL AÑO ANTERIOR (%)	4,39%

Tonnage Increase
+4,39%

Waste
Prevention

03 Strategy and Plan of Action

Waste Strategy and Action Plan



Enhance
Clean
Points

New facilities design



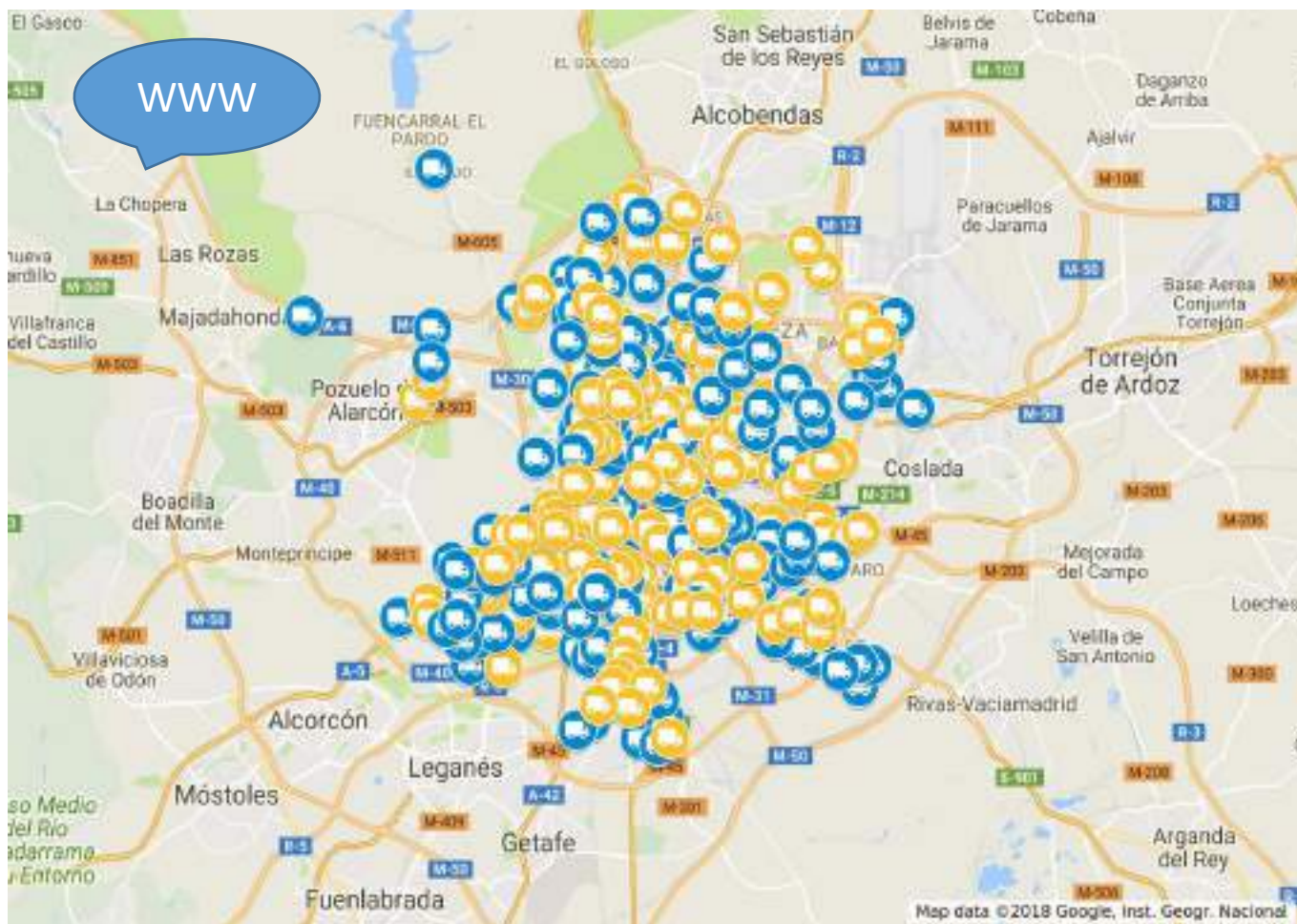
Agreeable image



New facilities design

Enhance
Clean
Points

Increase of locations
220 → 350 weekly stops (1,5 hours)



Enhance
Clean
Points

New urban furniture: proximity clean point





Enhance
Clean
Points

Re-use and waste prevention



Dale una nueva vida a tus objetos usados

www.revivemarketplace.com/sanblas

Punto Limpio San Blas - C/ San Romualdo 20, Madrid

ferrovial MADRID

Es una plataforma web y móvil gratuita para intercambiar objetos usados en favor del medio con el objetivo de promover su reutilización. **Revive San Blas** es un proyecto piloto que busca fomentar e implantar una cultura de reutilización de objetos, impulsar el uso del punto limpio entre los ciudadanos de Madrid e incrementar la concienciación y la participación ciudadana.

Cómo funciona:

- Accede** a www.revivemarketplace.com/sanblas
- Regístrate y crea tu perfil.** La utilización de la plataforma Revive San Blas es totalmente gratuita.
- Made available que quieres intercambiar, incluye una descripción para fotografía.**
- Busca por el catálogo de objetos disponibles para tu elección.** Crea lista de objetos favoritos para recibir alertas cuando estén nuevos productos.
- Revisiva través de la web los que más te gustan.** También un plazo de tres días para recoger un producto reservado a través de la web.
- Te acercamos al punto limpio de San Blas para que recibas tu objeto.** También el apoyo de una persona para facilitarte lo necesario.

¿Qué puedes intercambiar:

Deportes y ocio: Juegos de mesa, instrumentos, libros, revistas, fotos, cámaras, aparatos, etc.	Juguetes y bebés: Juguetes, trineos, cochecitos, accesorios bebés, cunas, sillitas, etc.	Hogar: muebles, vajilla, cerámica, bañadores, sillas, etc.
---	--	--

Punto limpio San Blas
C/ San Romualdo 20, 28007 Madrid

Fecha del proyecto
Ejemplo de fecha: el 20 de diciembre de 2017

Horario del servicio
Lunes a viernes: 10 a 20h
Sábados: 8 a 20h
Domingos y festivos: 9 a 14h

Contacto
info@sanblas.revivemarketplace.com

Improve
home and
commercial
waste
collection

Improvement of Services



Packaging waste → 4th day collection



Commercial glass
collection door to door

Commercial cardboard
collection door to door

Service certification



Improve
home and
commercial
waste
collection

New containers



1 cont/450 hab

1 cont/450 hab

Improve
home and
commercial
waste
collection

Biowaste collection



SOLO ORGÁNICA



Restos de fruta
y verdura



Cáscaras de huevo,
marisco y frutos secos



Restos de infusiones
y posos del café



Tapones de corcho,
cortices y semillas



Restos de carne
y pescado



Otros restos
de comida



Servilletas usadas y
papel de cocina sucio



Pequeños restos de
jardinería: plantas,
hojas secas, ramas de flores...

atención telefónica 010

 MADRID

Improve
home and
commercial
waste
collection

Improvements

Clothes and footwear waste collection (1150 containers)

Used oil collection

Renew eco collection fleet



Citizen awareness and education

Awareness campaigns and information



Citizen
awareness
and
education

Transparency and Open Government

Transparency website:

<https://transparencia.madrid.es/portal/site/transparencia>

Open Data (set of statistical data, maps and plans):

<https://goo.gl/Hqdaho>

04 Biowaste collection

2017



Pilot areas

2018

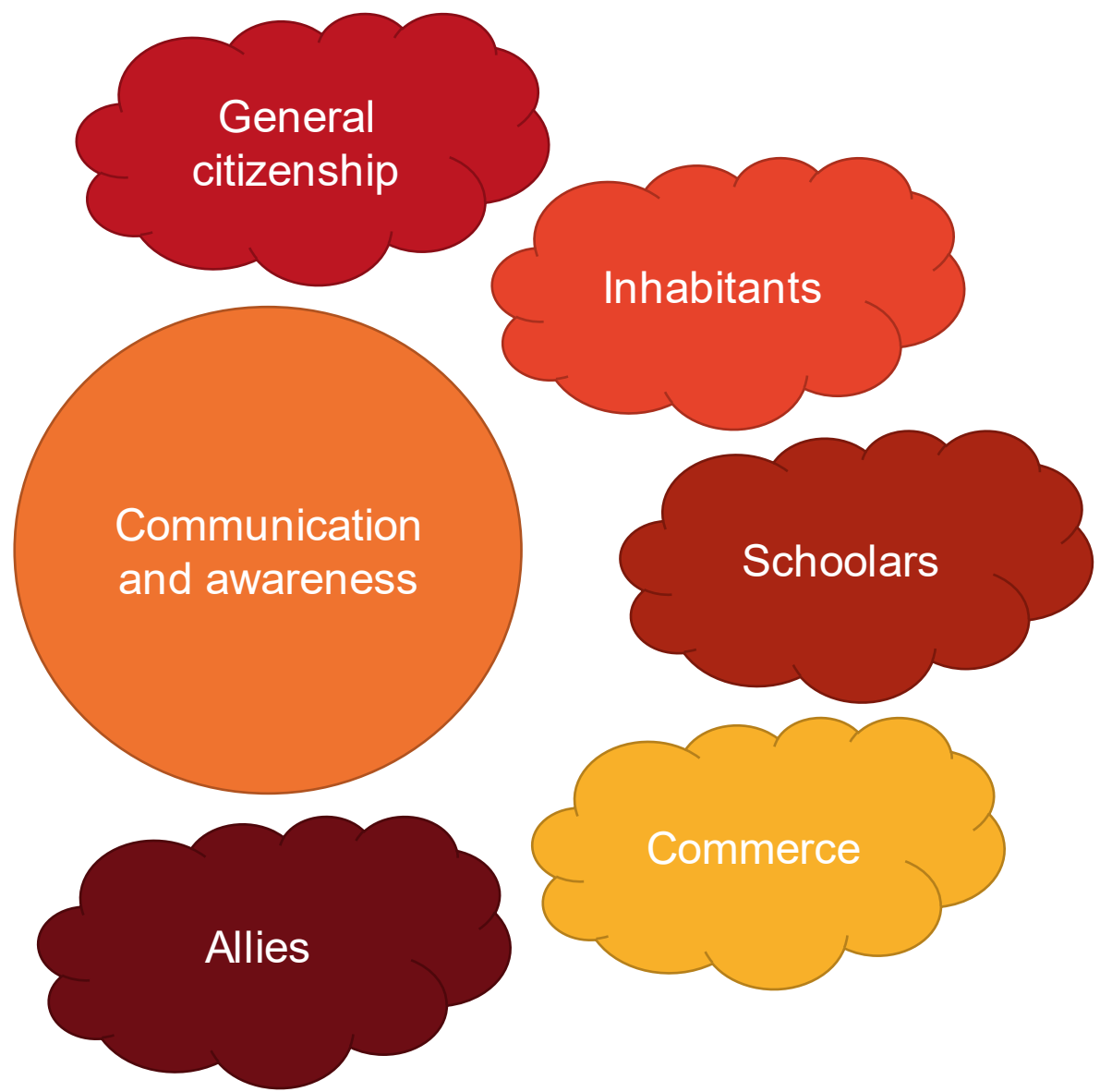


1st extension: 12 Districts

2019



2nd extension: rest of the city



Thank you

010
madrid.es
organica@madrid.es



medio ambiente y
movilidad

MADRID

